

# Oral Histories: Video interviews with people who remember these scenes





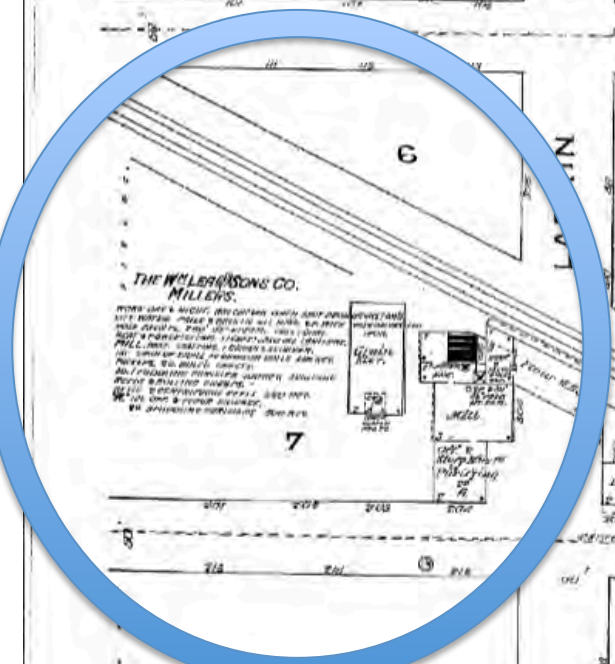
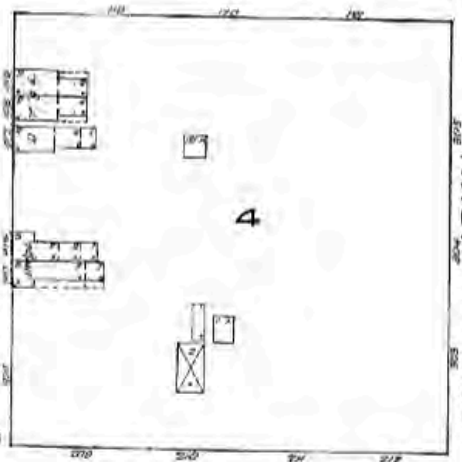


NOTICE—The SANBORN MAP & PUBLISHING CO. (limited) will loan, to parties purchasing one copy of this map, a Dupliam, with the material accompanying and agreeing that it is to be used exclusively by New General or Local Agent and that the further agreement that, if not so used, one of the two copies will be returned to said Company.

NEWCASTLE GAS CO.  
NOT TO BE USED FOR OTHER PURPOSES  
MANUFACTURING



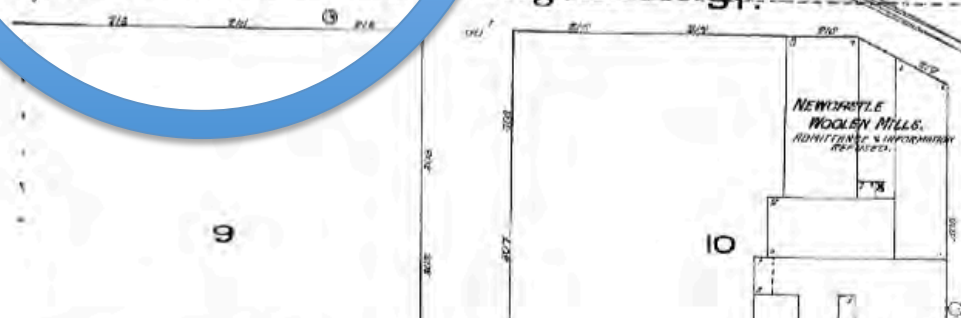
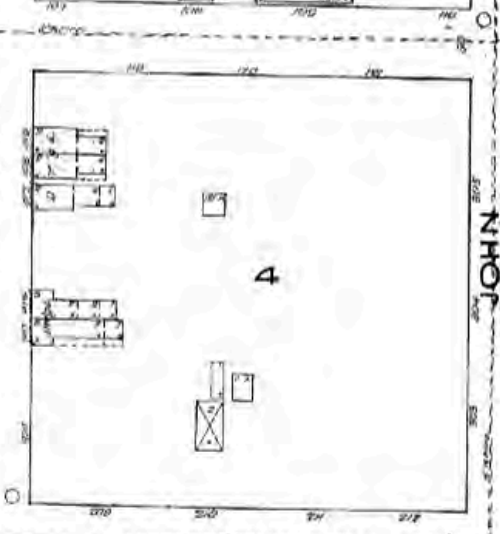
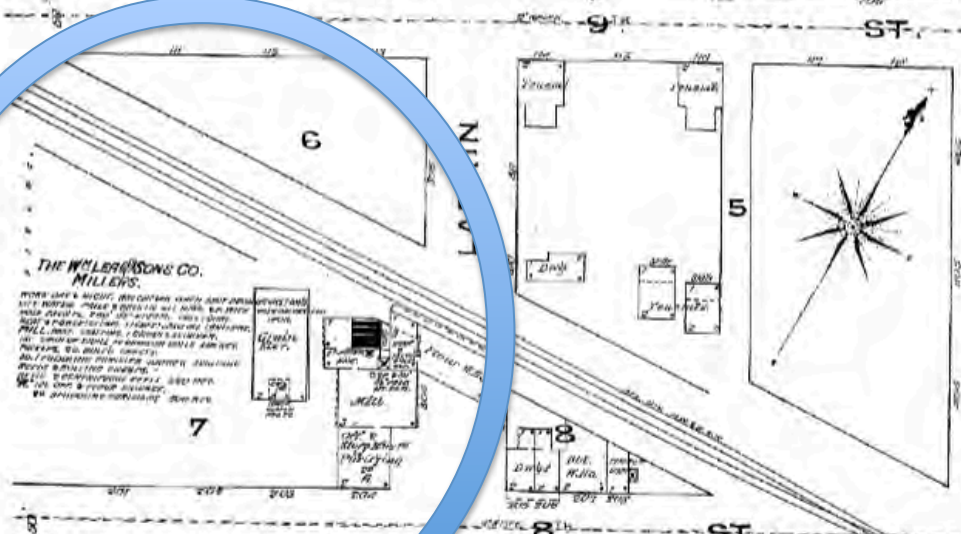
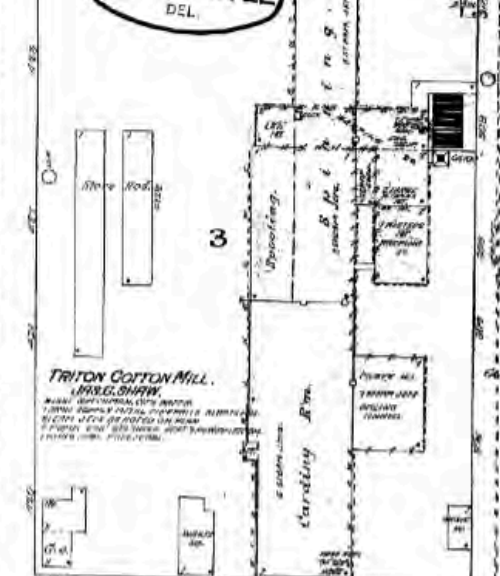
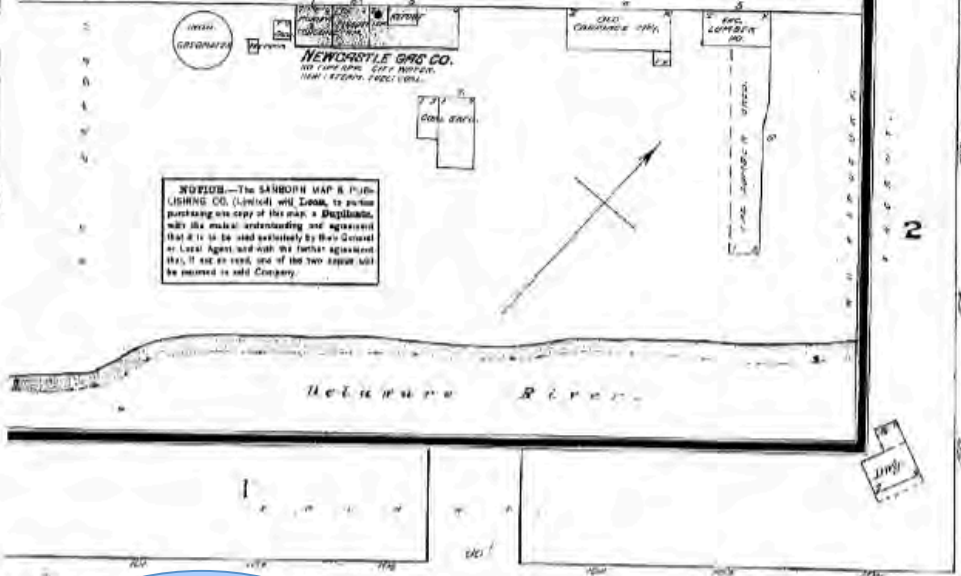
TRITON COTTON MILL.  
L. PAUL SHAW



NEWCASTLE WOOLLEN MILLS.  
ADMINISTRATIVE & INFORMATION

WASHINGTON AV.

JOHN









New Castle School 1889

Jane Ann Moore with hat





yokes, corn knives, shovels, forks, 3 log chains, 1 oil brooder stove, 1 brooder house, 10 ft. x 12 ft.; 3 feeder troughs, lot of small feeders.

One 10 ft. x 12 ft. CABIN for hired help.

**HARNESSES**—Three sets double harness, collars, bridles, halters, saddle and bridle.

**CORN**, by the bushel; **HAY**, by the ton, baled or loose.

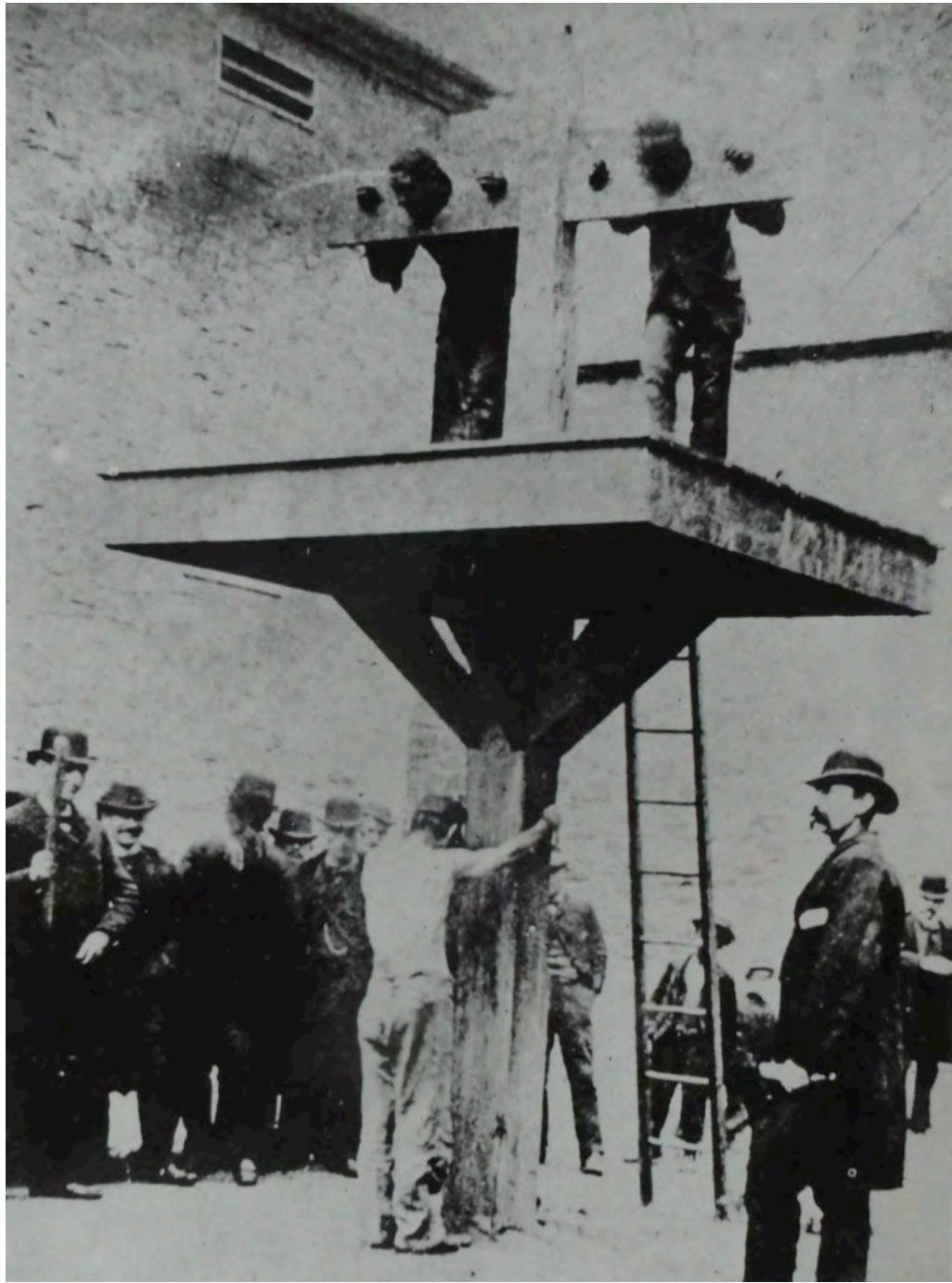
Four **FARM GATES**, about 50 line  
**IRON FENCE POSTS**.

**HOUSEHOLD GOODS**—One enamel

Opera House,  
1899

















M&T Bank

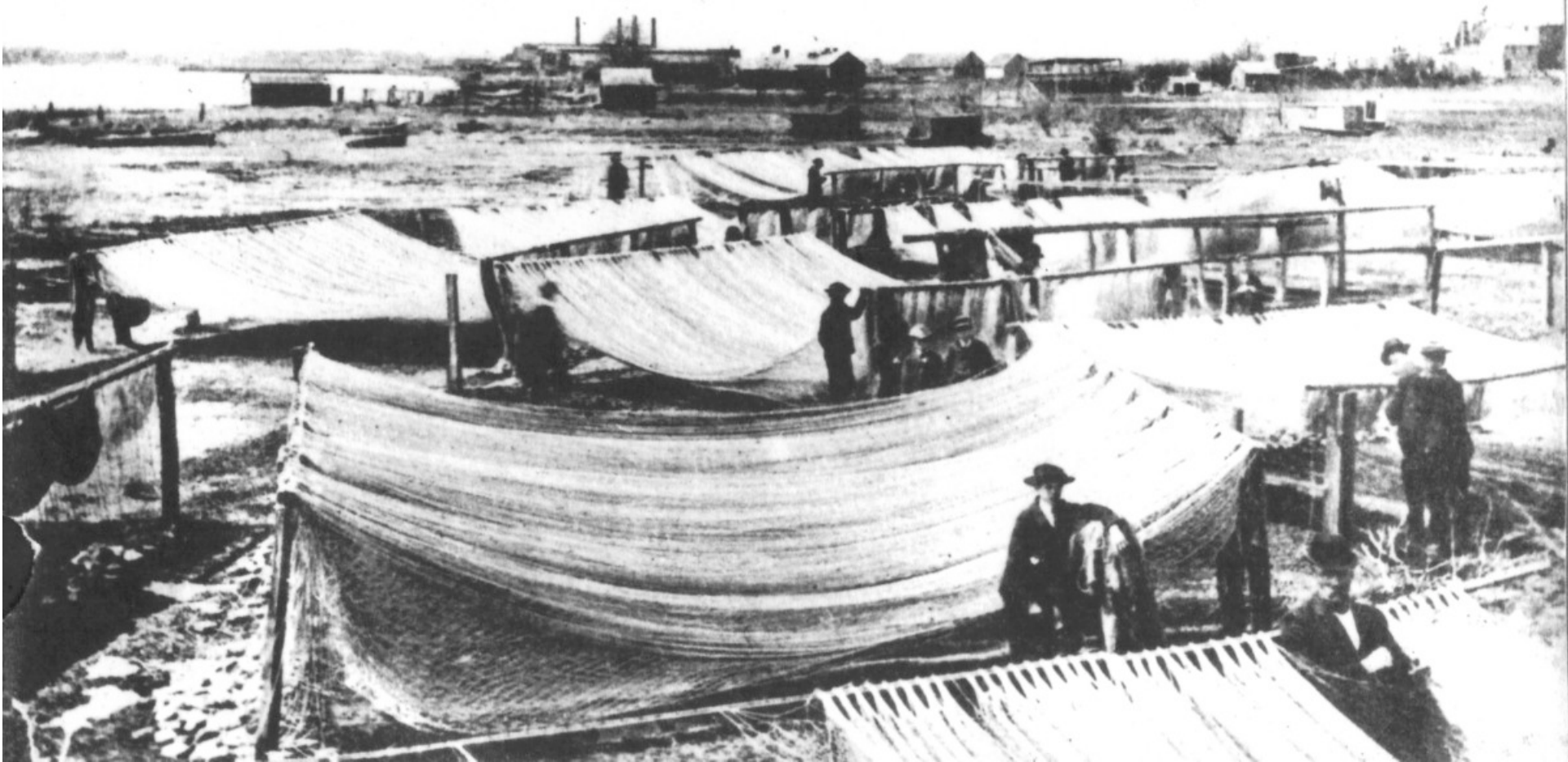
ANW-4139

E-41555

PARKING

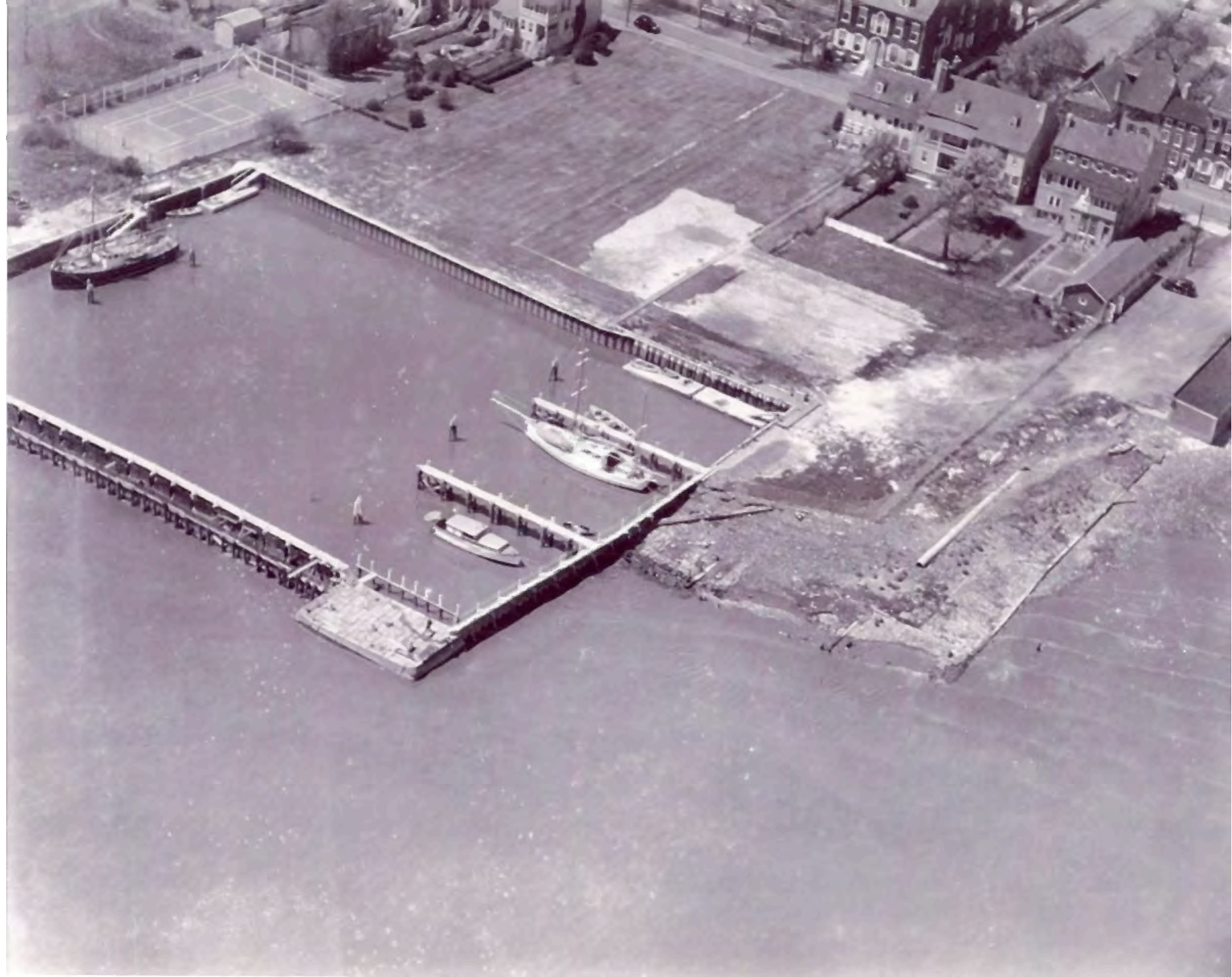


Shad Nets at NEW CASTLE, Delaware.







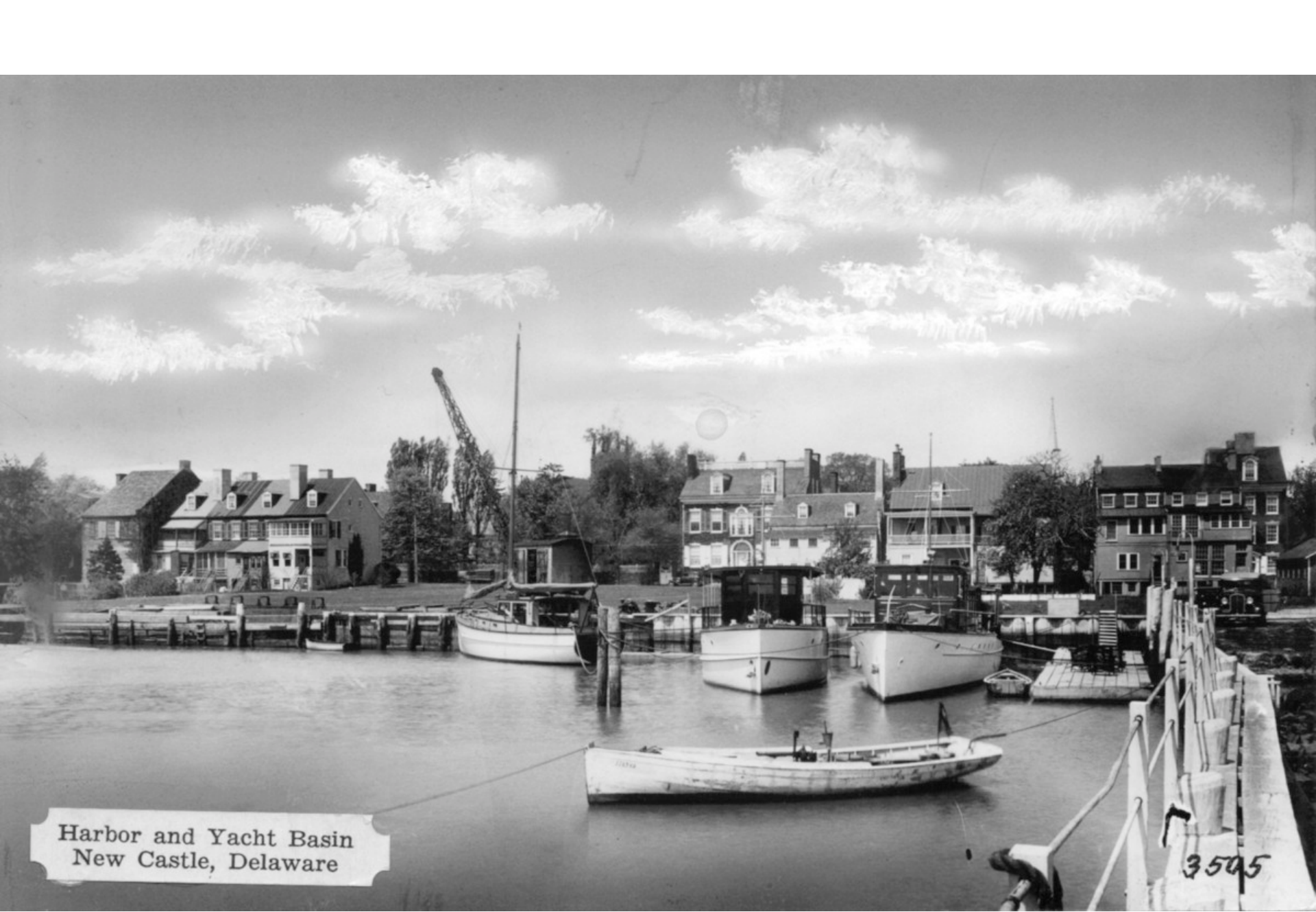




A Harbor at NEW CASTLE, Delaware.







Harbor and Yacht Basin  
New Castle, Delaware

3505

# Early/Late Federal

~1780-1812/1824-1840



18 E 3rd, c1800

27-29 The Strand, c1826



- Fanlights with tracery
- No string course or water table
- "Symmetrical"
- Flemish bond, not glazed header
- Medium mortar joints, not pressed brick
- 6-8 panel door

